

# **Winshare '95 Help File**

**Welcome!**

**Quick Start**

**Shareware/Freeware and public Domain programs**

**Copyright information**

## ***Copyright Information***

Please refer to the **WELCOME** section of this Help file.

**W95 Collection(c) 1995.** This work is protected under Canadian, American and International treaties. programs and registered trademarks belong to their respective owners.

You are encouraged to copy any shareware, freeware, demo, and public domain file from this CD. **YOU ARE NOT AUTHORIZED to lease, rent, use within the context of a promotion, or any other use, especially commercial uses such as charging for more than a "regular" and acceptable amount are prohibited**, unless you receive written permission from us, the publishers of this compilation. The interface included on this CD is copyright (c) 1995 LCDCAN Publishing.

We are not responsible in any manner as to the performance and results resulting from the use of this CD or the software on this CD-ROM. All programs, including the interface, are offered as is, and no one of our authorized distributors, employees, or anyone else involved in the production and/or distribution of this CD, directly or indirectly, can be held responsible for the manner in which the product is used.

Please also remember that the shareware programs on this CD require for the most part that a fee be given to appropriate parties if you continue using these programs. These authors give their best effort to offer you these applications: please encourage them.

## Quick Start

This interface looks best using a 256-color palette.

The main screen you will see every time you start is called the Software Control Center (**SCC**). Here are simple descriptions for each of the features in the **SCC**:

**NOTE:** If you leave your cursor on top of a section of the interface for about 3 seconds, you will see appear a hint box giving you a short description of this particular part of the interface.



This is the hint showing up for the Launch button.

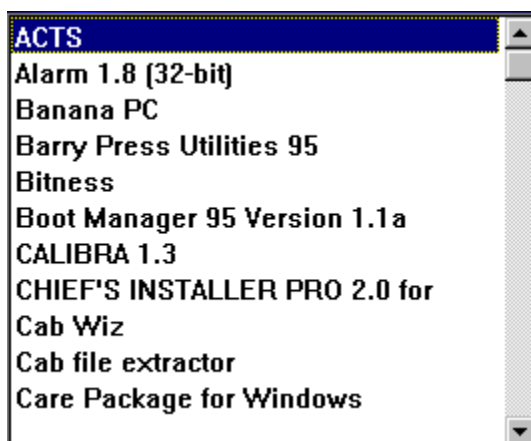
### CATEGORIES:

Choose among the various categories to view shareware titles.



### TITLES:

Title of the software package.



### DESCRIPTION:

A few lines to describe the use(s) and purpose of the software package.

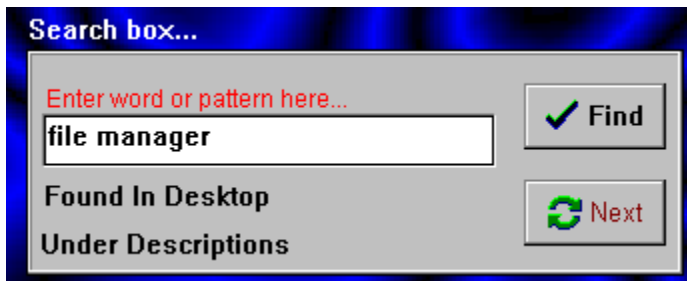
### ARROW BUTTONS:

These arrow buttons let you browse through the software titles.



### SEARCH BOX:

The search engine is a quick and easy way to let you find what you are looking for. Simply enter the word(s) or string to browse for throughout the entire compilation, then click on the **FIND** button. The search engine will browse through the titles and descriptions. Any word(s) or string are acceptable.



### ENTER WORD...:

This is where you write in the expression to search for.

### FIND:

Click on this button to begin searching for the expression in the search box.

### NEXT:

Search for the next match in your specified search.



### LAUNCH:

By clicking on this button, the presently selected title will be launched/activated. For many programs, a setup is required, but many can be run directly from the CD-ROM.

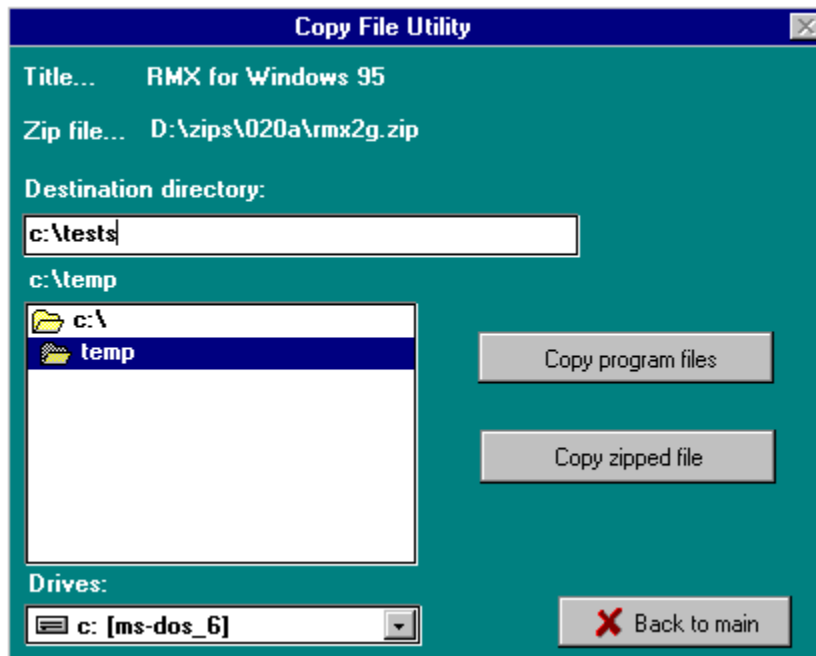
### README:

When clicked, this button displays additional information. When not available (the software needs to be set up first), this button will be greyed out (will not be available).

### COPY:

When you click on the **COPY** button, you will be prompted to select a destination. You can choose to copy either the program files or the compressed program files (**ZIP** or **EXE** self-executable.ZIP files). See below for explanation of the copy procedure.

## COPY FILE UTILITY



### DESTINATION DIRECTORY:

Lets you choose where you want to copy the file(s) to. Double-click on a directory to change the default destination.

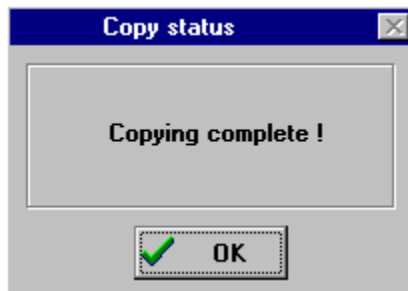
**NOTE:** you can always type in any drive and directory you choose. The dialog will create this destination if it does not exist.

### COPY ZIPPED FILE:

Will copy the compressed (.ZIP) file to any location (directory) you select. Once the copy process is complete, a dialog box will appear to notify you.

### COPY PROGRAM FILES:

Will copy all program files into the selected destination (and subdirectories, if any). Once the copy process is complete, a dialog box will appear to notify you.



### DRIVE:

Choose which destination drive you will copy the file(s) to.

### BACK TO MAIN:

Cancel the operation, and return to the main menu.

**EXIT:**

Terminates the program.

## ***Shareware/Freeware and Public Domain Programs***

**Shareware** is a distribution method developed so as to offer the consumer the opportunity to try out programs at their leisure. After a certain amount of time of use, the user is to register the product, by paying a reasonable fee.

**Shareware programs** are the property of the author(s) and/or copyright holders. The authors/owners give you a limited right of use for their work. You cannot sell/lease, package with a commercial product, among other things ( more specific information is offered in the text file offered with every software package). We are supplying you with a wide selection, for evaluation purposes, and in no way whatsoever do we or you own any rights to the software programs. Our part is limited to distribute programs in return for a fee covering costs related to getting you these programs. In other words, your cost is to cover handling, copying and other related fees.

**More to the point:** shareware involves an enormous amount of effort on the part of the creator(s). Registration fees are usually very reasonable. In many instances, when you register a program, there are many extras that may be offered to you, such as free updates, published manual, support, and many others. Shareware has been key to helping millions of users extract better use and performance from their computers. Help them by encouraging these valiant workers.

**Freeware software** are programs can be distributed any which way, yet in most cases, the author will retain the copyright. Freeware does not require you to pay a registration fee, though many authors would not mind receiving some acknowledgement. One original way to do so is for users to send your software author a postcard. They deserve it fully.

**Public Domain** refers to a work that has no copyright restriction. In other words, no limitations whatsoever is made unto the distribution or the product itself.

## **Welcome!**

We have assembled the latest shareware, freeware, public domain and demo software, and all have been verified so that they will add and improve your Windows 95 experience.

In this compilation, you will find that software has been divided into various categories so to help you guide your search. If you are searching for a specific word or subject, simply use the search engine from the main menu.

Some of these packages will need to be installed onto your hard disk. We could have made it so that most would run directly from your CD, yet we wanted to ensure that the installation remain as the authors intended it to be. To avoid too many programs and files taking up space on your hard drive, we suggest that you simply create a directory on your hard disk to use for installing programs requiring setting up.

### **By using this CD, you accept these following terms:**

We will not be responsible for the use, performance, and any effects resulting from use of the software on this CD-ROM. Any copyright infringement emanating from the authors are their own responsibility. In no way shall any person or party involved in the production and distribution of this product be held liable for consequences resulting from the use of this product.

All copyrights of programs on this CD are the property of their respective owners. We do not own any rights over any of the software included on this CD, although the structure and organization, and the Software Control Center interface files are copyright (c)1995, all rights reserved. The shareware and freeware and public domain files included on this CD are property of their authors, and in no way does LCDCAN Publishing own or assumes that they are other than the authors' property. The program included in this product are for evaluation only.





